

ChemWell®-T

Fully Automated Biochemistry / Turbidimetric Analyzer

Maximum throughput	100 test per hour, not including optional ISE
Min. and Max. volume	2 µL - 388 µL
Rack for reagents and samples	<p>The Universal Rack includes five removable and user-selectable sectors for both reagent bottles and sample tubes. Assorted replaceable racks and custom designed rack segments are available for various bottle sizes</p> <p>Sector A holds four 30 ml reagent bottles Sector B holds four 15 ml reagent bottles Sector C holds four 5 ml vials and four 12 mm x 75mm tubes or 2 ml skirted conical tubes Sector D holds ten 12 mm x 75mm tubes Sector E holds eight 13 mm x 100 mm tubes or 12 mm x 75 mm tubes</p>
Number of specimens	Typically 20 including calibrators and controls but variable depending on rack sectors selected
Reaction vessel	8 cuvette strips, 5 tests per strip, total of 40 reactions on board
Minimum reaction volume:	240 µl
Maximum reaction volume	700 µl
Instrument bottles	0.25 L Priming Bottle
Thermal control	<p>Cuvette Carrier 37° C or ambient room temperature Refrigerated Reagent Rack cools 8° to 12° C below ambient through Peltier thermoelectric modules</p>
Optical design	Single channel photometer, NIST traceable absorbance calibration
Filter wheel	340, 405, 505, 545, 580, 630 nm
Light Source	Tungsten Halogen Lamp
Linear range	0.0 to 3.0A
Photometric Accuracy	<p>± (1% of the reading +0.005 A from 0 to 1.0 A) ± (2% of the reading +0.005 A from 1.0 to 3.0 A)</p>
Calculation modes	Single standard, factor, fixed time kinetics, kinetics by standard or factor, multicalibrator point-to-point, linear regressions, cubic spline, 4-parameter logistic and percent absorbance
QC Options	Store control data, print Levey-Jennings or QC range plots, calculate SDs
Upgrade Format	USB and Internet upgrades
Operating Systems	Microsoft Windows®
Dimensions & Weight	<p>53 cm Wide x 50 cm Deep x 40 cm High Approximate weight < 15 kg (37 lbs)</p>
Optional barcode scanner	Barcode scanner available, allowing for rapid entry of sample data using code 39 barcodes

 **AWARENESS**
TECHNOLOGY, INC.
www.awaretech.com

ISO 13485:2016
 

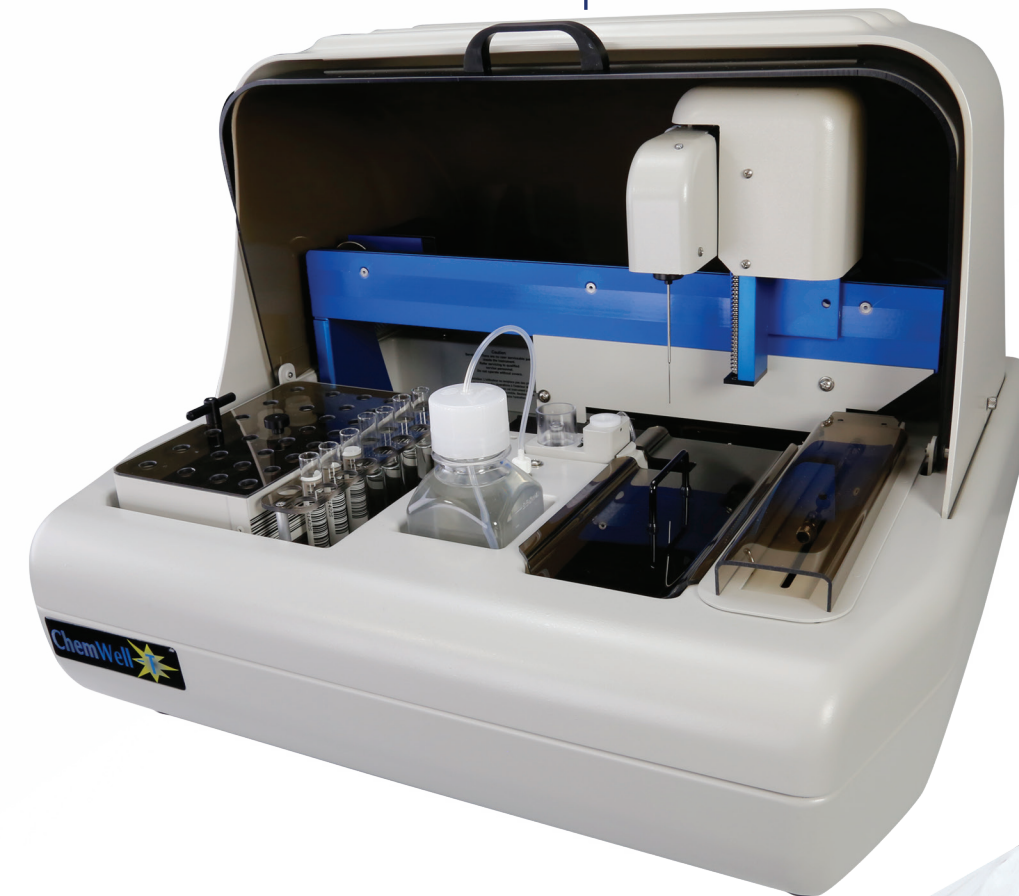


314620 F

ChemWell®-T

Deliver Results With Confidence

Fully Automated Biochemistry / Turbidimetric Analyzer

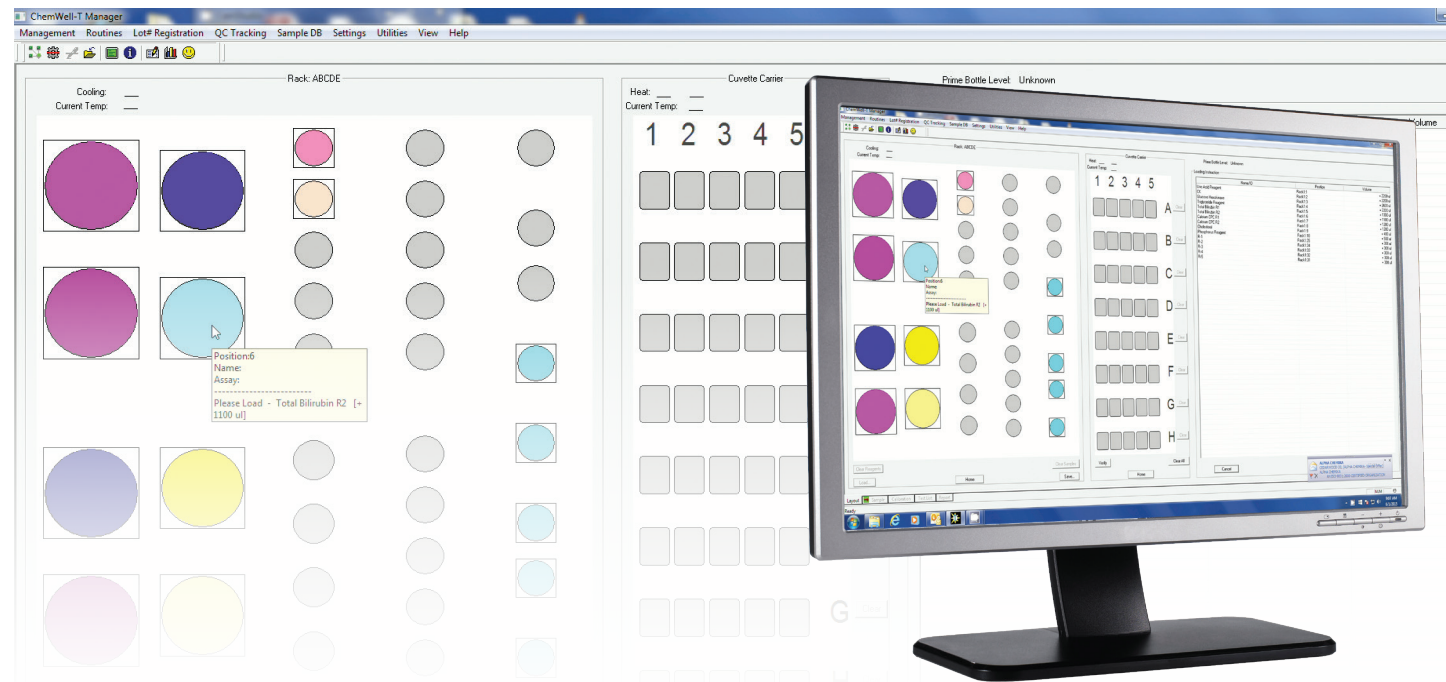


Accurate results providing confidence to clinicians

Compact and efficient chemistry analyzer

Reliable performance

 **AWARENESS**
TECHNOLOGY, INC.



The ChemWell®-T Advantage.

Accurate and Precise

Above all other considerations when you are buying a biochemistry analyzer, you want results you can always trust. ChemWell-T's reliable optics and precision pipetting provide consistent dependable performance for your peace of mind.

Flexible

ChemWell-T is a computer-dependent open system. Its comprehensive software allows you to enter parameters to build a test menu for a wide variety of commercially available biochemistry and turbidimetric kits. It is easy to edit, delete, and grow your list of applications.

Robust

Materials and workmanship are specified and tested to assure product quality and longevity. In addition, to help assure quality performance, ChemWell-T has many instructional prompts, error messages, and features that track instrument QC and service needs.

Easy

ChemWell-T's intuitive software visually mirrors what takes place on the analyzer. This facilitates programming assays, daily operation, and use of the many additional optional features that make ChemWell-T both powerful and convenient.



ChemWell®-T Automation, with all its advantages, optimized for lower throughput labs

Capabilities Overview

ChemWell-T is designed to perform kinetic and endpoint assays with single or multiple reagents. It includes patient database software (or accepts a worklist via LIS). Once you enter an order and load the reagents and samples, the instrument processes all the tests and presents results for reporting, storing, or electronic export. A variety of assay calibration equations are available. Features include random access, continual loading, stat capability, on-board reagent cooling, ISE module ready, acceptance of controls anywhere any time, and automatic application of user entered QC criteria and test interpretations.

Quality Control

- Registry of controls by lot number and expiration date
- Automatic Levey-Jennings tracking or QC plots based on acceptance ranges
- Many options for specific test QC such as limits for blank absorbance, minimum or maximum starting absorbance, and reflex testing for out-of-range kinetics

Rack Configurations

ChemWell-T comes with a universal reagent and sample rack having 5 different sectors labeled A-E. Additional sectors can be ordered separately. Sectors A-D fit any location in the rack, making it possible to customize the rack for various workloads simply by rearranging the interchangeable sectors.

An optional second rack is available with a fixed configuration. This rack is insulated and includes a cover to help chill reagents left on board for longer periods of time. The instrument and insulated rack are available with and without a sample barcode scanning option.

Reaction Cuvette and Carrier

ChemWell-T's 37° C incubated cuvette carrier holds 40 tests as eight disposable strips of 5 wells each. The carrier automatically aligns wells for pipetting, mixing, and reading.

ChemWell® Management Software

ChemWell software has two components: Assay Editor - where test programs are created and edited, ChemWell Manager - where patient data is stored, work-lists are generated and all the operations are controlled.

Five tabs walk the user through test set up

SAMPLE - select or enter sample Identifications and choose from the test menu which tests to run for each, select replicates if desired and Indicate Stat samples

CALIBRATION - use a stored curve or make a new one. For multi-point assays there are many options to choose from including curve editing ability

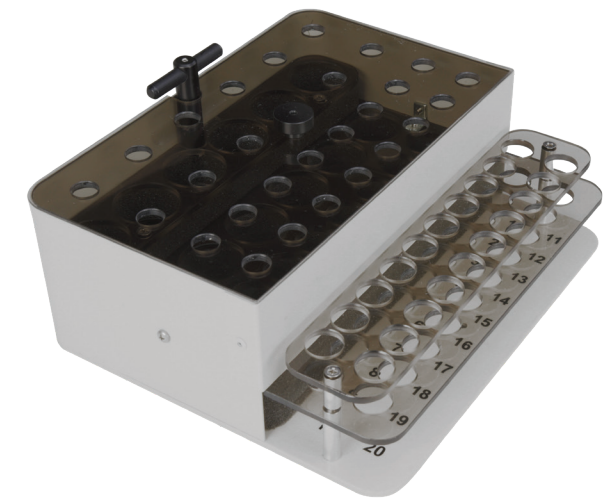
LAYOUT - verify proper placement of reagents and samples using colorful graphic references and familiar tools such as drag and drop

TEST - monitor work-in-progress and completed results

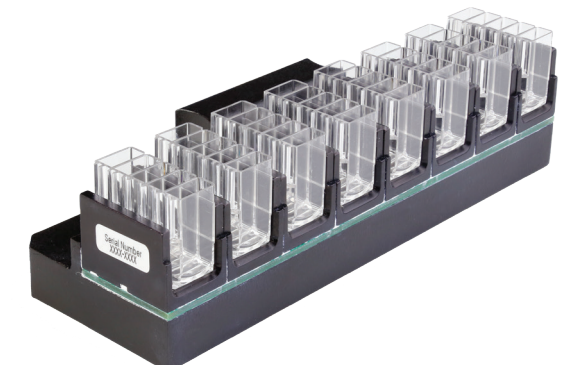
REPORT - create reports by assay, by patient, by date range and more



Universal rack
Optional interchangeable segments available



Optional insulated reagent and sample rack
(available with or without barcode)



37° C Heated 8x5
Cuvette Carrier

