

STAT FAX® 3300

Programmable open system

- Real time kinetic plots
- Levey-Jennings graphs for QC tracking
- Stores calibration and standard curves
- Stores and reports patient data

Biochemistry Analyzer



3300 shown with optional keyboard and heat block

Stat Fax®, serving laboratory needs worldwide for more than 25 years

Famous For Durability

- Accepts both round and square test tubes or flow cell
- Bichromatic optical system with 6 filters and space for 2 additional filters (340 nm - 700 nm)
- Calibration traceable to NIST standards
- Multiple calculation modes: factor, single standard, point-to-point, regression, and index calculation
- Reads, calculates, and prints results, 3 seconds per tube
- Store up to 120 tests in memory
- Stores over 500 patient results and 500 control results
- Optional incubation block at 37° and external keyboard

The compact design, large LCD screen and user friendly interface make the Stat Fax® 3300 biochemistry analyzer an excellent choice for a variety of laboratory applications.

 **AWARENESS®**
TECHNOLOGY, INC.

Stat Fax[®] 3300 Biochemistry Analyzer

View kinetic plots in real time

Photometer

Tube or cuvette	0 to 2.5 absorbance units
With flowcell	0 to 3.5 absorbance units
Stability	Drift or no more than 0.005A in 8 hours/bichromatic
Light source	Tungsten halogen lamp, with lamp saver feature
Standard wavelengths	340, 405, 505, 545, 580, 630 nm plus 2 optional
Optional filters	340 - 750 nm
Filter types	Ultra long life multiple cavity IAD hard coat

Sampling

Sample volume - flowcell	Programmable 250 µL - 750 µL
Flowcell body	Surgical grade stainless steel
Minimum Volume - tube 12 mm	1ml

Multiple Calculation Modes

Factor, Single Standard, Point-to-Point, Regression, Index Calculation

Rate (factor/standard)	Live graphic display of reaction
Curve fit	Linear, point to point, or regression
Miscellaneous	blank and curve recall, sample blanking

Special Features

Password protection for test results and parameters
Levey-Jennings QC tracking, patient reports, job creation

User tests

Stored patient results	More than 100
Stored control results	More than 500
Optional external heat block	More than 500
Optional read cell cooling	18 wells, controlled temp @ 37°C
Cell temperature selections	Peltier cooling system - cell only 25°C, 30°C, or 37°C

Dimensions

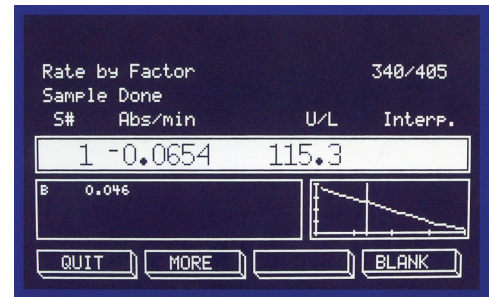
16" (40 cm) x 14.5" (37 cm) x 5.5" (14 cm)
12" (30 cm) with screen up

Weight

(17 lbs) 6.4 kg

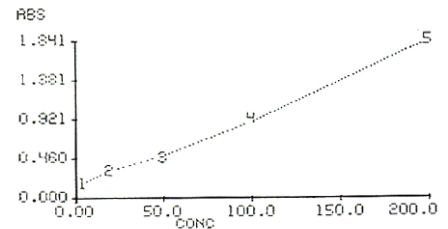
Power

100-240 VAC (auto-sensing) 50/60 HZ input, 90 watts

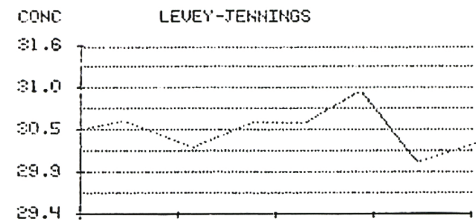


Multi-Point Mode
Wavelengths= 405 630nm
Standard# 1= 0.0
Standard# 2= 20.0
Standard# 3= 50.0
Standard# 4= 100.0
Standard# 5= 200.0

S#	Abs	µg/L	Interp.
B	0.024		
S1	0.128	0.0	
S2	0.319	20.0	
S3	0.495	50.0	
S4	0.894	100.0	
S5	1.841	200.0	



Multiple QC options assures linear kinetics and reliable results.



CONTROLS 1 TO 8 OF 8

ISO 13485:2016



AWARENESS[®]
TECHNOLOGY, INC.
www.awaretech.com

